

HUNT FRAME

ESTATE AGENTS



151 Seaside, Eastbourne, BN22 7NW

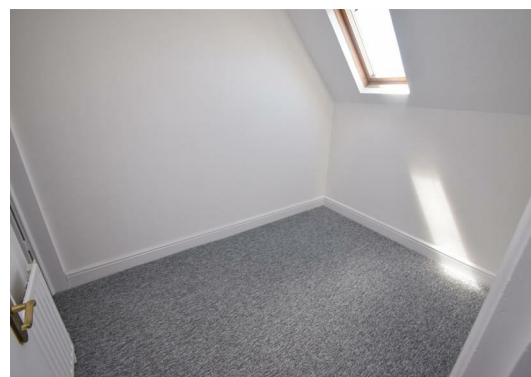
£700 Per Month



PLEASE CLICK EITHER 'CONTACT AGENT' OR 'FURTHER DETAILS' TO APPLY.

A compact one bedroom flat available to rent within the Seaside area of Eastbourne, close to local shops and bus routes. Situated on the second floor of this converted building and comprising lounge and NEWLY INSTALLED open plan kitchen, bedroom and en-suite shower room. Newly decorated and carpeted throughout. AVAILABLE NOW. ****ZERO DEPOSIT OPTION AVAILABLE****

HOLDING DEPOSIT: £161.53
SECURITY DEPOSIT: £807.69
COUNCIL TAX BAND: A



Communal front door with security entry phone to:

Communal entrance hall

Stairs to second floor, front door to:

Lounge

9 x 7'8 (2.74m x 2.34m)

Radiator, eaves storage cupboard, security entry phone, open plan to:

Kitchen

10'3 x 6'7 (3.12m x 2.01m)

Fitted in a range of wall and base mounted cupboards and drawers. Work tops with inset stainless steel sink and single drainer unit with mixer tap. Built in oven, hob and extractor. Fridge, cupboard housing gas fired boiler, double glazed window to rear.

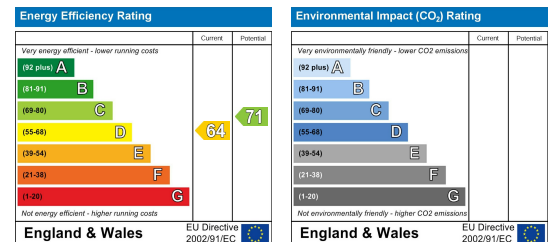
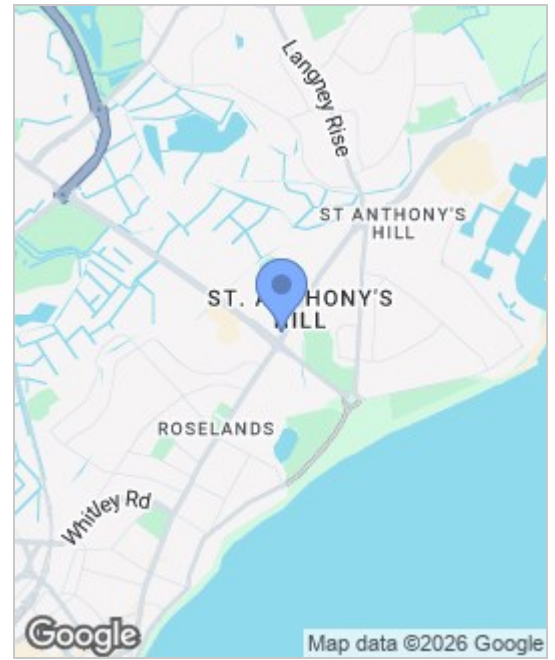
Bedroom

8'11 x 6'5 (2.72m x 1.96m)

Skylight window, radiator, door to:

Shower Room

Suite comprising shower cubicle, low level wc, pedestal wash basin..



These particulars, whilst believed to be accurate are set out as a general outline only for guidance and do not constitute any part of an offer or contract. Intending purchasers should not rely on them as statements of representation of fact, but must satisfy themselves by inspection or otherwise as to their accuracy. No person in this firm's employment has the authority to make or give any representation or warranty in respect of the property.